



# NEW COVENANT COMMUNITY

Progressive | Spiritual | Inclusive

FEBRUARY 2014 NEWSLETTER

## NCC STEERING COMMITTEE

Your NCC Steering Committee is hard at work as the new year begins. Members of the SC are: Suzie Hutton (Chair), Tom Sullivan (Vice-Chair), Karen Rousey (Secretary), Marie Genrich (Treasurer), at-large members Joe Boudreaux, Bruce Chandler, Betty Rademacher, and Janet Warfield, plus our pastors, Bob and Susan Ryder.

The Steering Committee had a great 1/2 day retreat on January 26, and are excited about the year ahead in the life of NCC. We met at Luther Oaks, thanks to Janet Warfield, and enjoyed the convenience of a nice private room, as well as coffee and lunch service – thank you again Janet!

Highlights of our meeting included a couple of fun team building exercises, which led to preliminary planning for our upcoming visit (April 26 & 27) from Alban Institute Consultant, the Rev. Sarai Rice. We set our meeting calendar for the year, and elected new members to serve on the Lectureship Committee (Janet Chandler, Sandy Hupp, Dick Watts, and Joe White will join Brian Finch, Pam Lewis, Pam Lubeck, Mary Beth Taylor, and Jim Wagner) and the Campus Religious Center Board (Mark Lewis will join Matthew Dahmm, Brian Finch, Bob Ryder, and Pam Unkrich, with Royal Gray serving as an alternate).

Additionally we heard reports from the Partner's in Mission Group, Social Justice Group, our pastors, the Campus Religious Center Board, and the Lectureship Committee. We received an update on the upcoming new Directory, and approved the 2013 Year-End Financial Report and December meeting minutes. We also considered a possible student pianist to fill in on occasion for Russ. It was a full meeting and we worked efficiently to get all of our work done in a timely and fruitful manner.

## FEBRUARY WORSHIP

**February 2** ~ Susan Ryder and Nikki Brauer will share about the Spiritual Wellness work they are doing with ISU.

**February 9** ~ Evolution Sunday

**February 16** ~ Mary Ann Pullin from HSH Ministries will talk about their "Bridge of Hope" program.

**February 23** ~ Hymn Sing

New Covenant Community  
210 W. Mulberry St.  
Normal, IL 61761  
309.454.7362  
[www.nccnormal.org](http://www.nccnormal.org)

## WINTER ADULT EDUCATION

This coming **Sunday, February 2 is the last day to sign up** for the Winter group of classes for the Adult Education Academy. Here is what we are offering this time around:

Sunday mornings at 9am beginning **February 16**  
*Parker Palmer's Healing the Heart of Democracy*

Sunday mornings at 8:30am beginning **February 16**  
"The Power of Your Presence" with Donella Hess Grabill

Sunday mornings at 9am beginning **March 2**  
*Lost Christianities: The Battles for Scripture and the Faiths We Never Knew*  
by Bart Ehrman

You can sign up on the back table on Sunday, or email Susan Ryder to indicate which class you want to join, and if you need a book to be ordered (if your class has a book). Books will be available on Sunday, February 9 so you have time to prepare for your class.

## SOCIAL JUSTICE GROUP UPDATE

Notes from January 15, 2014 Meeting

### IPA Update

Pam, Julie and Joe reported the good news that Regions Bank has committed to no longer doing payday lending. IPA is also working to have the Federal Reserve exert pressure on this issue. Mid Illini Credit Union now has an alternative to payday loans available – a one-year loan with \$1000 limit, with interest rates between 25 and 35% (due to high risk).

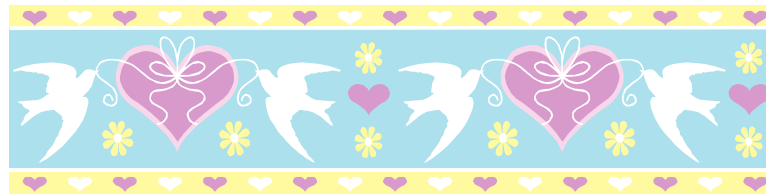
### Book Bike

Books continue to be collected at NCC and are delivered to Karen Schmidt.

### New Business

Pam reported on her meeting with a member of Normal Mennonite Church regarding their program aimed at making their faith community life and building environmentally sustainable. Charline shared that there was a guide for this kind of congregational work available from the national Presbyterian offices.

**Next meeting: Feb 12 at 7pm.** All are welcome to attend—contact one of our members for more information. (Charline Watts, Pam Lubeck, Julie Sullivan, Margaret Rutter, Joe Boudreaux)



### NCC WOMEN'S RETREAT

The NCC Women's Retreat is **April 11-13**, and we will be returning to the Villa Maria Retreat Center on Lake Springfield from Friday evening through Sunday lunch. Registration materials will be sent out in March ~ in the meantime, mark your calendars!



### FEBRUARY CALENDAR

**Sunday Worship at 10:30**

Sunday School meets during worship

**Feb. 11 ~ 6:30pm** Steering Committee

**February 28 ~** March newsletter deadline  
(newsletter will be sent late)

To keep up to date with NCC happenings make sure to check out the NCC calendar online at

[www.nccnormal.org/calendar.htm](http://www.nccnormal.org/calendar.htm)

## MEDITATION GROUP

Newcomers are always welcome! We meet the first, third, and fifth Thursdays of the month from 4:15 to about 5:15 at one of our homes. If you are coming for the first time, please call Mary Beth Taylor or Margaret Rutter, for complete information.

## NCC COMMITTEES AND WORK GROUPS

Here are some of the folks who serve on various committees and work groups on behalf of NCC. If we've left some off please let us know.

### NCC Endowment Committee

Mark Austill, Brian Finch, Marie Genrich

### Pastor/Parish Relations Committee

Nikki Brauer, Caroline Fox, Peg Kirk, Mark Lewis, Jim Turner

### Jim and Gwen Pruyne Lectureship in Progressive Christianity Committee

Janet Chandler, Brian Finch, Sandy Hupp, Pam Lewis, Pam Lubeck, Mary Beth Taylor (Chair), Dick Watts, Jim Wagner, Joe White

### Campus Religious Center Board of Directors (NCC Representatives)

Matthew Dahmm, Brian Finch, Mark Lewis, Pam Unkrich, Bob Ryder (Royal Gray, alternate)

### Partners in Mission

Karen Rousey, Willemina Esenwein, Marla Finch, Pam Lubeck, Margaret Rutter

### Care Team

Willemina Esenwein, Marie Genrich, Mary Beth Taylor

### Adult Education Planning Group

Nikki Brauer, Marla Finch, Donella Hess Grabill, Tom Sullivan

### Social Justice Group

Joe Boudreaux, Pam Lubeck, Margaret Rutter, Julie Sullivan, Janet Warfield, Charline Watts, Linda Wilkins

## PARTNERS IN HEALING



NCC is a delegate congregation to Advocate BroMenn Medical Center. As part of that delegation, we participate in a project of intentional prayer for specific medical units associated with BroMenn on a rotating basis with other local congregations.

Each congregation is asked to pray for patients receiving medical care in a specific unit, as well as for the staff who are treating them and/or for their families for a month. During the month of February, we will be praying for the patients, family members, and staff of Advocate BroMenn Home Health & Hospice (HHH).

Home Health & Hospice provides in-home care to patients in a 50 to 60 mile radius of Bloomington/Normal. Patients range in age from infancy to older adults. Patients include those who were born prematurely, are recovering from illness, injury, or surgery, or are dying.



## February Birthdays

- 1 Dave Hirst
- 14 Bob Ryder
- 15 Caleb Sneed
- 20 Kathleen Kirk & Pam Lewis & Marie Genrich
- 21 Bruce Chandler

*If we don't have your birthday, please let Susan Ryder know so that we can include you next year!*



### NEWSLETTER CALL FOR NEWS

*Please share reports and announcements, what you are reading and poetry you've written, or let us know of a news story we could mention.*

*Please email articles to Susan Ryder at [normal@sue@aol.com](mailto:normal@sue@aol.com) by February 28 for the March newsletter (which will be late due to the Ryder sabbatical).*

New Covenant Community  
210 W. Mulberry St., Normal, IL 61761 | (309) 454-7362 | [www.nccnormal.org](http://www.nccnormal.org)